

# **MATERIAL IN A THEMATIC PHILATELY EXHIBIT**

## **Some Guidelines**

---

*FIP Seminar*

*Bandung, August 5, 2017*

**Tono Dwi Putranto**

*FIP Thematic Commission*

# *THE THEMATIC EXHIBIT*

*has **two** essential properties:*

*1. It describes a **story***

*2. The story is illustrated with  
**appropriate philatelic material in its  
postal aspects***



**The material should be selected according to**

**A) PHILATELIC CRITERIA**

*POSTAL aspects of philatelic material*

*(no private prints or markings!)*

**B) THEMATIC CRITERIA**

*LINKED to the theme or development*

**C) PHILATELIC VARIETY AND QUALITY**

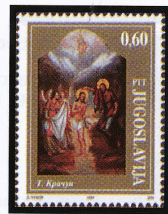
*A WIDE variety and BEST quality*



D. Bačević,  
"Blagovijest",  
(JM 2580)



N. Nešković,  
"Rođenje Hristovo",  
(JM 2581)



T. Kračun-Dimitrijević,  
"Hristovo krštenje",  
(JM 2583)



T.J. Češljarić,  
"Bogorodica i Hristos",  
(JM 2582)



Frederiko Benković  
"Abrahamova žrtva"  
(JM 2979)



"Hristovo rođenje", manastir  
Hilandar na Atošu, 17.st.  
(JM 2990)



Hristofor Zefarović  
"Jakovljeve ljestve"  
(JM 2981)



T. Kračun-Dimitrijević  
"Voznesenje Hristovo",  
(JM 1278)



František Jelovšek  
"Sveta obitelj",  
(JM 1280)



Tripo Kokolja, "Krunisanje  
Majke božje"  
(JM 1283)

*NO STORY*

*An old "motive" exhibit*

*NO VARIETY!*

*NOT THEMATIC!*



## 4.0. RIJETKE I ZAŠTIĆENE VRSTE PTICA (EZP i WWF)

## ZAŠTITA PRIRODE



**Priljepak**  
(JM 1338)



**Galica crvenokljuna**  
(JM 1340)



**Buljina**  
(JM 1342)



**Alpska koka**  
(JM 1342)



**Ševa**  
(JM 2608)



**Vuga**  
(JM 2508)



**Kreja**  
(JM 2509)

**Mala droplja**  
(JM 1339)



**Liska**  
(JM 718)

**Orao ribar**  
(JM 1987) ↓

**Pupavac**  
(JM 1988) ↓



**Šumska šljuka**  
(JM 722)



**Velika droplja**  
(JM 720)

*Still no story ...*

*... but at least two  
types of material ...*



## ZAŠTITA PRIRODE

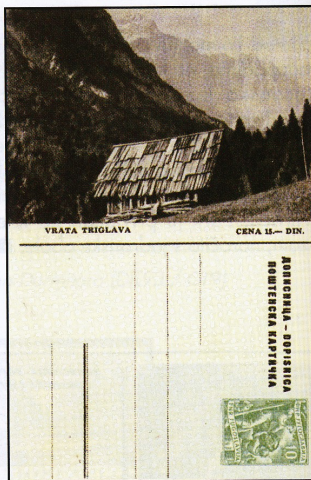
## 2.5. N.P. TRIGLAV

**Triglav**, planinska grupa Julijskih Alpa s istoimenim vrhom (2863m), najvišim u Sloveniji. Proglašen je Nacionalnim parkom 1981 godine. ➡



*Uspon na Triglav*  
izvršen je po prvi put  
1778 godine s  
Bohinjske strane. ←

*Vrata Triglava*  
(DK 151/406) →



↑ *Aljašev dom* (na 1015 m visine) u dolini Vrata, odakle  
slijedi uspon sa sjeverne strane (DK 93/LJ I).



*Uspon na Triglav* (DK93 / LJ32) →

➡ S usponom preko sjeverne strane Triglava povezan je početak alpinizma u Sloveniji. 1893 godine osniva se prvo Slovensko planinarsko društvo, 1903 godine se radi alpinistička staza iz doline Vrata. ■



*A thematic exhibit with  
a (although minimal)  
story ....*

*.... and some material  
variety*

# Appropriate material

A Thematic exhibit uses all kind of **philatelic material** in its **postal aspects** according to illustration, purpose of issue etc.

*Guidelines:*

*Appropriate postal-philatelic material is that which, for the purpose of **transmitting mail** or other postal communications, has been **issued, intended for issue, or produced in the preparation for issue, used, or treated as valid for postage** by governmental, local or private postal agencies, or by other duly commissioned or empowered authorities.*

# MATERIAL

There should be as much variety as possible  
(both within the whole exhibit and on the single sheet)!

- In the **TYPE** of material:

Stamps, cancellations, postal stationery, covers, proofs...

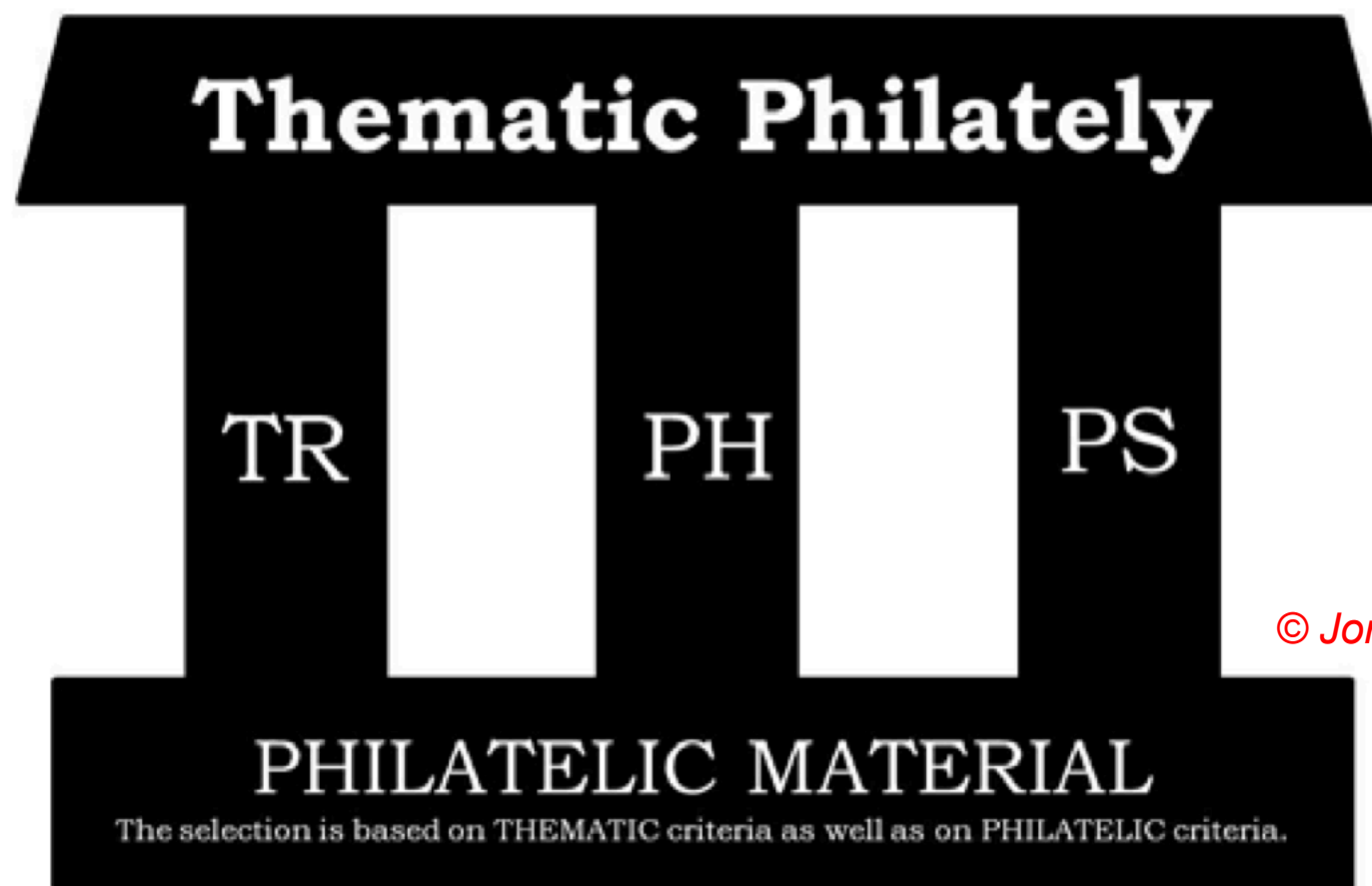
- **Spatial:**

Material from ALL OVER the world

- **Temporal:**

Material from ALL PERIODS from pre- to modern-philately

# THE PILLARS OF THEMATIC PHILATELY



© Jonas Hällström

*The material in a thematic exhibit is mainly  
that used within these three FIP classes*

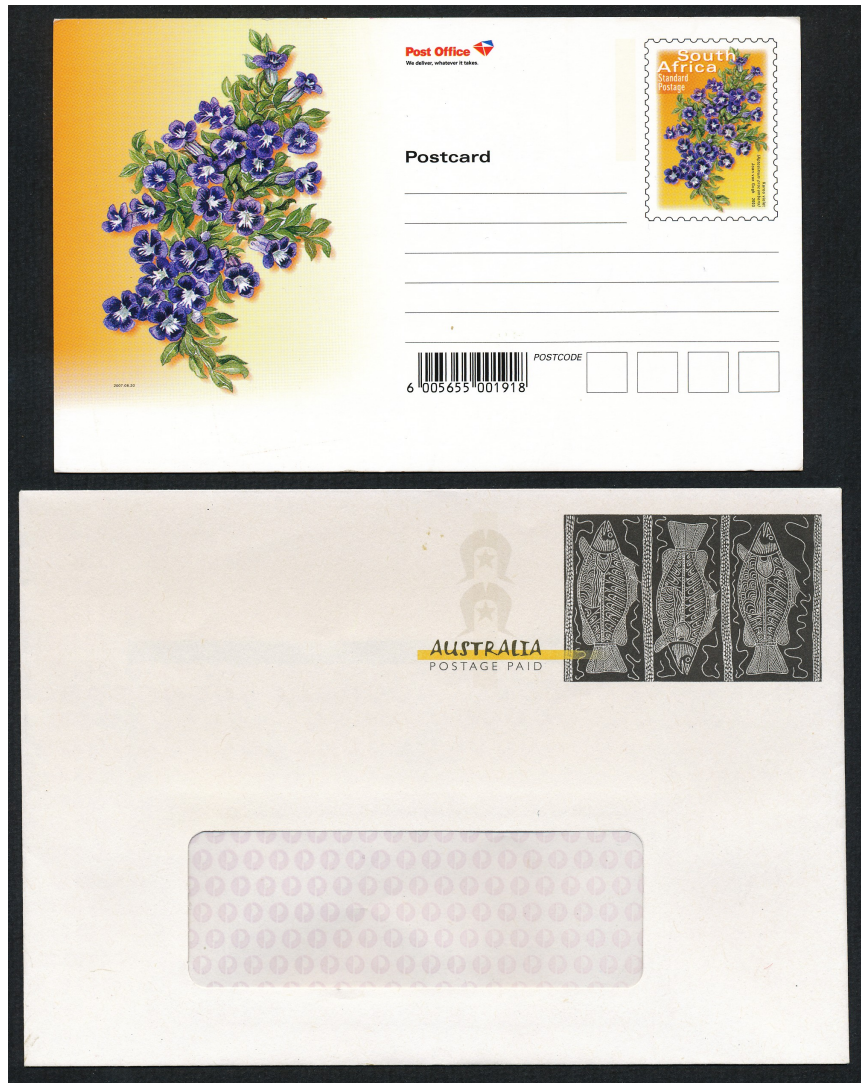


# STAMPS, BOOKLETS, METERMARKS



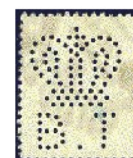


# POSTAL STATIONERY

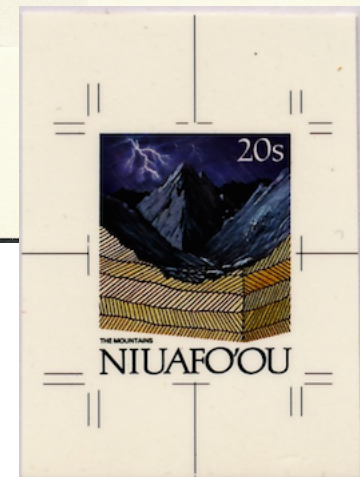




# POSTAL HISTORY, WATERMARKS, PERFINS



# STAMP PROOFS





# ARCHIVE CARDS, STATIONERY PROOFS

Stempelbild

DUSSELDORF 3035  
-31128  
1

Düsseldorfer  
Rückversicherungs-  
Aktiengesellschaft

DEUTSCHES REICH  
045

Francotyp: B 1235 Post: Düsseldorf 1

Firma: Düsseldorfer Rückversicherungs A.-G.

Motor: Levy Nr. 241621 220 Volt = 1/2 Ps

Übersetzung: Motor: 900 Masch.: 1000 Riemen R

Geliefert: 3.11.28

Stand des Summenzählers: 999000 Sperrung auf: 500,-

Stand des Kartenzählers: 999 angefangene Karte Nr.: 001

Plombenschlüssel (Post) gez. Nr.: 111225 Permutationsnummer: 1834

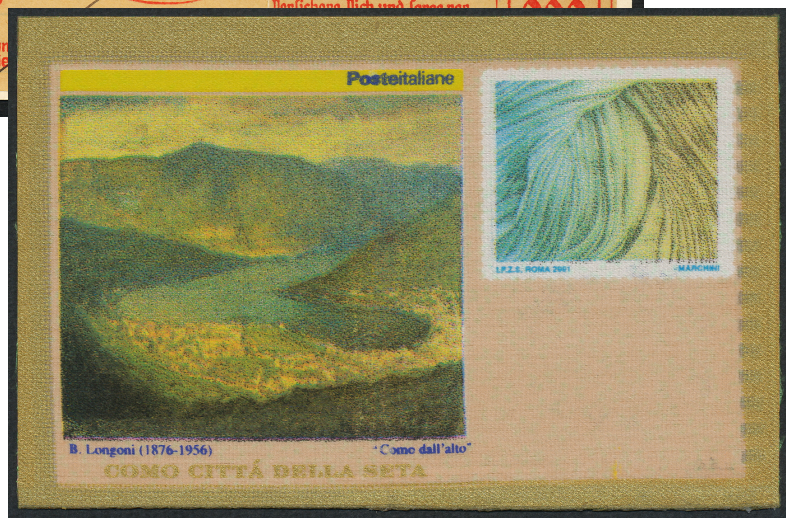
4115  
d. d. 30

EOS

DEUTSCHES REICH  
008

0203

Deutscher Bestattungs-  
Verein Aktie





# MULTIPLE FRANKING LETTERS

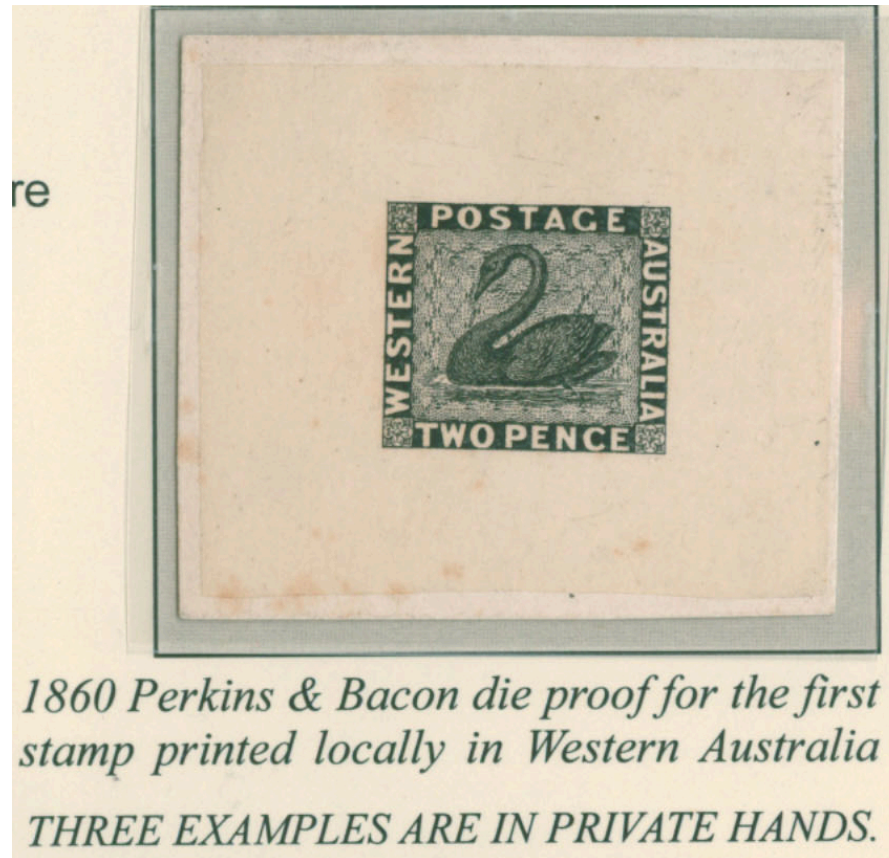


*Letters franked with multiple stamps of the same design*

# IMPORTANT PROOFS

---

*Example of material of world importance*



*Damian Läge*

# Degree of importance of philatelic material

---

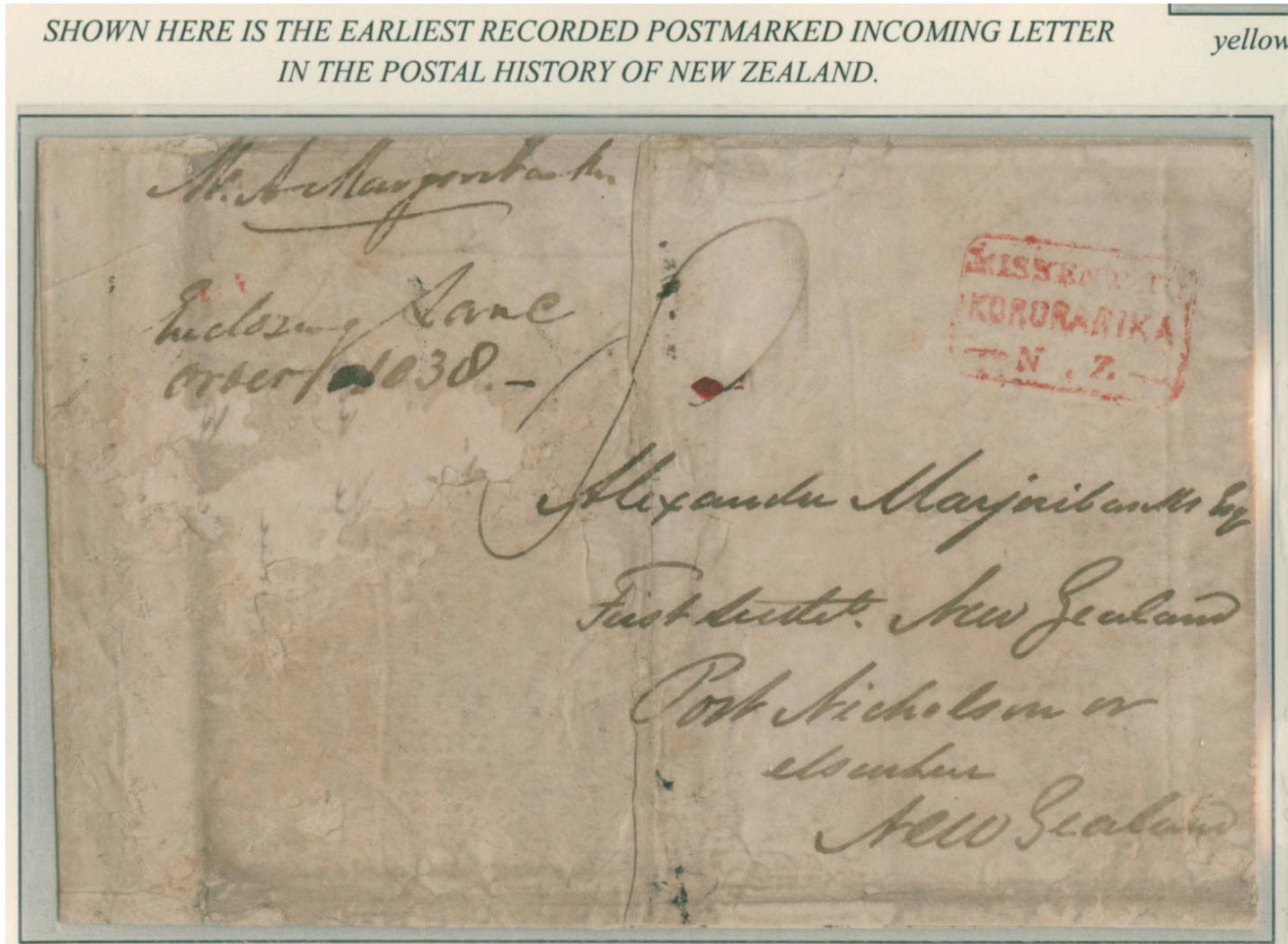
- Stamps
- Postal stationery and booklets
- Other: cancellations, telegrams, frankings ...
- Artist sketches and examples of printing process\*
- Examples from postal history

(\*) Depends on the issuing country and printing hose (e.g. Tonga vs. House of Questa)



# General importance

*An example of material of world rarity*



*Damian Läge*



# Specific importance

---



*For Scouting*

*For Bicycle*







# Non-postal aspects of philatelic material

Some of the most common such material:

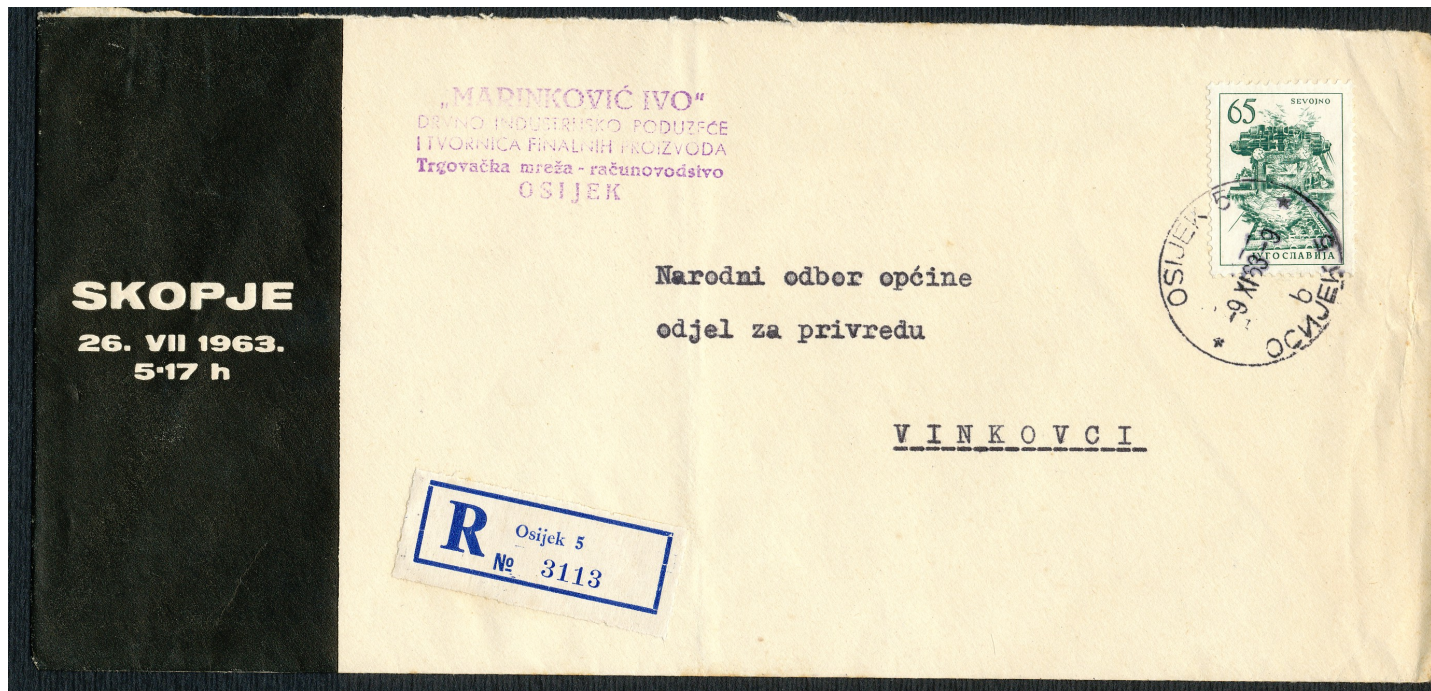
1. Postal stationery with added private print (repiquage)
2. Illustrations on FDC
3. Revenues (when not used postally)
4. Private decorations on covers and cards
5. Private (e.g. aero-philatelic) vignettes
6. Private cancellations(e.g.Antarctic bases, research vessels)
7. Content of letters, postcards (both text and drawings)
8. Cachets or address of sender, that do not imply the privilege of free postage



# Non-postal aspects of philatelic items

---

## Example



*The print on the left (Skopje, date and hour of the earthquake)  
MUST NOT BE USED in a thematic exhibit on earthquakes*

# Non-postal aspects of philatelic items

## Examples



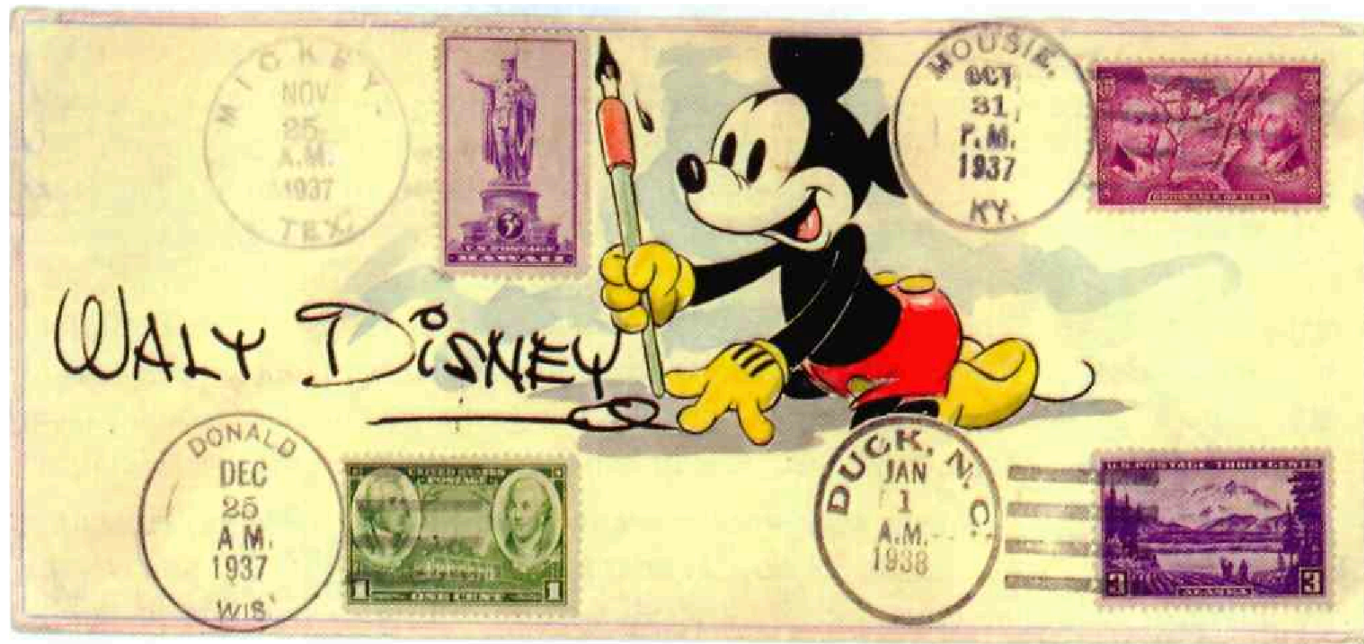
**Private prints on card  
and envelope**



# Non-postal aspects of philatelic items

---

## Example



*Private illustration, favor cancellations not for transmitting mail*

# Unappropriate material

*Items, that should not be used in a thematic exhibit*



*French gravures*

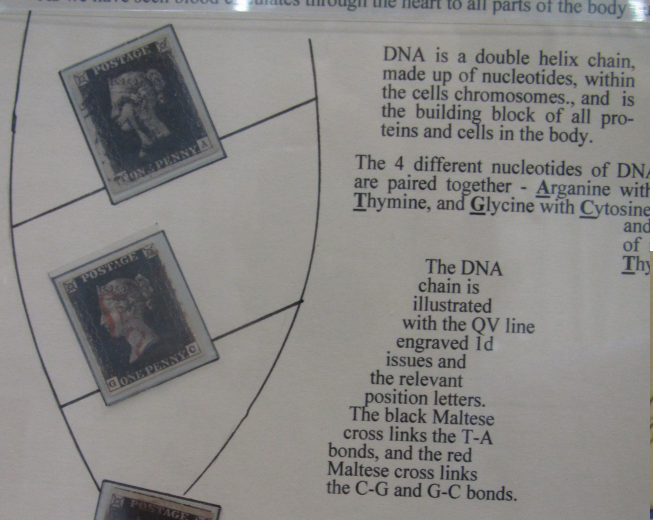


*Belgian ministerial sheet*



### 2.3. COMPOSITION OF BLOOD

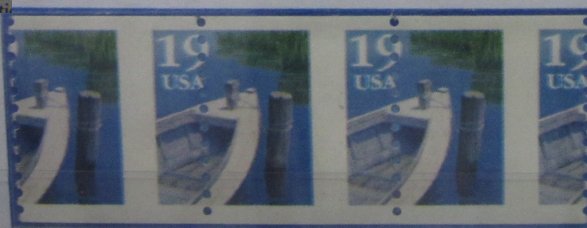
As we have seen blood circulates through the heart to all parts of the body.



Blood drop in correct position but red ink smear error on stamp face

Red ink smearing giving an impression of blood smearing - donated blood must not be wasted!

It is dangerous with holes on hull & bottom. ...



Misperforated

... The best way is to move all holes away.



Imperforated

... a ship was sinking



USA, 1983, Misperforated.

INNOVATIVE THEMATIC USE OF  
PHILATELIC ELEMENTS - EXCELLENT!



*THANK YOU*  
*FOR YOUR ATTENTION !!*